



#Allin4Kids

2022-23 CIS Wayne County Impact Report



Communities
In Schools

Wayne County

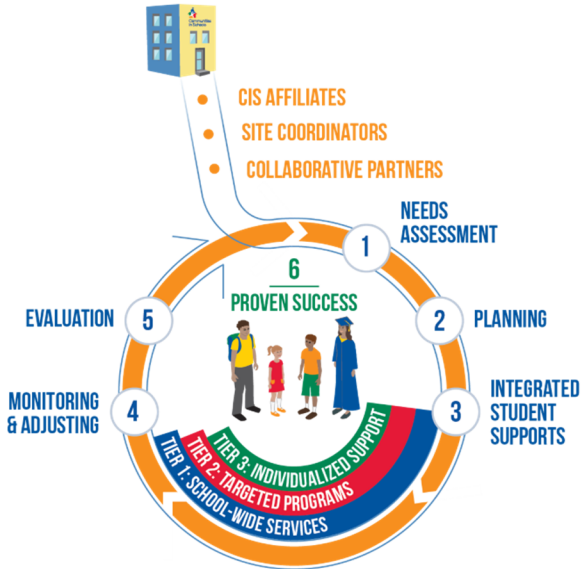
Our Mission

The mission of Communities In Schools is to surround students with a community of support, empowering them to stay in school and achieve in life. All of Communities In Schools' work is guided by the "Five Basics" - a set of essentials that every child needs and deserves:

1. A one-on-one relationship with a caring adult
2. A safe place to learn and grow
3. A healthy start and a healthy future
4. A marketable skill to use upon graduation
5. A chance to give back to peers and community

Communities In Schools is the only dropout prevention organization proven to both lower dropout rates and increase graduation rates. What sets Communities In Schools apart is our holistic approach to address both the academic and nonacademic needs of students. Working with school staff, Communities In Schools site coordinators (who are positioned in schools), identify students in danger of dropping out, assess what resources they need, and then provide those resources through appropriate community partnerships. These resources include but are not limited to food, clothing, new shoes, VSP vision/eyecare vouchers, Bed in Bag, school supplies, winter apparel, personal hygiene, etc.

OUR UNIQUE MODEL



© Communities In Schools 2017

• CIS AFFILIATES

Hire and train site coordinators, bring the CIS model to schools in need and mobilize partners to provide resources.

• SITE COORDINATORS

Trained professionals who work with school administrators to assess needs, develop a plan and build a team to provide supports to schools and students.

• COLLABORATIVE PARTNERS

Schools, businesses and community agencies all work together with site coordinator to deliver supports to students and families.

1 NEEDS ASSESSMENT

Analyze multiple sources of data to identify the key needs of the school and individual students.

2 PLANNING

Site coordinators lead their school support team to develop a plan to prioritize supports that address academic and non-academic needs.

3 INTEGRATED STUDENT SUPPORTS

Site coordinator and partners deliver tiers of support to the school, students and their families.



4 MONITORING & ADJUSTING

Site coordinator continuously monitors student and school progress and adjusts supports to optimize results.

5 EVALUATION

Continuous assessment of partners and student supports by the CIS affiliate to demonstrate results and improve practice.

6 PROVEN SUCCESS

We increase graduation, reduce dropout, and improve attendance for schools in need.

TIER I

Tier I services are widely available and designed to foster a positive school climate and address school-level risk factors. Some examples of Tier I services that CIS Wayne County provides are:

- CIS Game of Life
- Mobile Dentist
- Clothing Closet
- Hallway Monitoring
- Mentoring

TIER II

Tier II services are targeted services which are typically provided in a group setting to case-managed students with a common need. Some examples of Tier II services that CIS Wayne County facilitates are:

- After School Tutoring
- Homework Groups
- Social Skills Groups
- Lunch Groups
- Community Service Groups
- Physical Health Groups
- Trauma/Crisis Support Groups

Tier III

Tier III services are targeted services which are typically provided in a group setting to case-managed students with a common need. Some examples of Tier III services that CIS Wayne County facilitates are:

- Tutoring
- College Application Assistance (FAFSA, etc)
- 21st Century Scholars Assistance
- Goal setting
- Mentoring
- Incentives
- Family Engagement
- Connecting Community Resources
- College and Career Planning

2022-23 Sponsors

\$10,000+ Sponsor

Blue Buffalo
Hill's Pet Nutrition
Reid Community Benefit
Richmond Cronin Toyota
Ronald McDaniel Foundation
Stamm Koechlein Foundation
United Way of Whitewater Valley
Wayne County Foundation
Wayne Bank

\$5,000+ Sponsor

Belden
Early Childhood Literacy Fund
First Bank- Richmond
First English Lutheran Church
Golay Foundation Inc.
Meijer
The Brave Heart Foundation
Todd and Susan Miller
Town of Hagerstown

\$3,000+ Sponsor

Dot Foods
Boston United Methodist Women
Christ Presbyterian Church
Glick Fund
3 Rivers Credit Union
Vigran Family Foundation
Wayne County Treasurer

\$1,000+ Sponsor

Amanda Eyer
Annette Warfel
Barbara Haetman
Bill and Ruth Ann Black
Bradford and Mary Ann Barrett
Family Foundation
Circle You Help Center
Contract Industrial Tooling
David & Carla Stidham
David & Sabrena Bartram
David Rogers
Delta Kappa Gamma Society
Kappa Chapter
Eric and Rebekah Dimick
Girls Inc Wayne County
Greg Jepson
Hoosier Transit

Menasha
Kappa Kappa Kappa Inc
Kars 4 Kids
Koechlein Family Fund
Lingle Family Charitable Giving
Logue's TLC Pet Hospital
Marc & Sue Miller
Nancy Benner
Pardos Service Inc
Phil and Cathy Stevenson
Reid Foundation
Richmond Casting Company
Robert McFarland
Sugar Grove Community Church
Tim and Angela Coffey
Whitewater Valley Motorcycle Club
Whitewater Valley REMC

Women's Fund \$500+ Sponsor

Beach Automotive
Boston Beaver Forrest Cross & Sickmann
Cambridge City Chamber of Commerce
Carol Hinshaw
Central United Methodist Church
Dan & Angela Dickman
Economy United Methodist Church
Emily Schaeffer
G101.3
Kathryn Girten
Lynn and Rose Mayer
McDowell Family Fund
Mark Barker

Micheal and Kathleen Khamis
Micheal Swain
Natco Credit Union
Pat James
Richmond Moose Lodge 167
Roger Golden
Saint Elizabeth Catholic Church
Jackie Schlichte
Shane Bietry State Farm
Sharon and Ray Ontko
St Elizabeth Seton Parish
V.F.W post 1108
Wayne County Retired Teachers



Partners

All Pest Exterminators
 Amy Hubble- Office 360
 Belden
 Birthright
 Blue Buffalo
 Boys and Girls Club
 BSN Sports
 Centerstone
 Centerville Christian Church
 Chase Bank
 Circle U Help Center
 Department of Family and Children Services
 Dollar General
 Dot Foods
 Dr. Tavel Family Eye Care
 Drs. Logan and Bailey
 Drs. Reising and Burkhart
 Earlham College
 Eye Care Center
 Firefly
 Fishers Optometry
 Girls Inc.

Gleaners
 Hill's Pet Nutrition
 Indiana University East
 Ivy Tech Community College
 JACY House
 James L. Harper, OD
 Kate Hogg
 Life Spring Church North/South
 Lions Vision Program
 Lyle Ahmrein, OD
 Meridian Mental Health Services
 Mobile Dentist
 More Than Words
 Natco Empowerment Center
 Nathan Hogg
 Northside Church of Christ
 Open Arms Ministry
 Owens Optometry
 Pizza King
 Purdue WC Extension Office
 Purina
 Reid Community Benefit

Restoration Church
 Safety Village
 Safety Village of Wayne County
 Shane Bietry-State Farm
 St. Pauls Lutheran Church
 St. Vincent DePaul
 Terry Logan
 3Rivers Credit Union
 Twenty-First Century Scholars
 Ullery's Homemade Ice Cream
 Wayne Co Sheriff Department
 Wolverine Worldwide

Board of Directors

Mike Gaddis
President
 Wayne Bank

Melissa Vance
Immediate Past President
 Wayne County Chambers of
 Commerce

Emily Shaeffer
Vice President
 Nettle Creek School
 Corporation

Phil Stevenson
Treasurer
 Centerville-Abington Schools
 (Retired)

AJ Sickmann
Secretary
 Boston Bever Forrest Cross &
 Sickmann

Shane Bietry
 State Farm

Dave Bartram
 First Financial

Theresa Lindsey
 Economic Development
 Corporation of Wayne County

Tim Davis
 Northeastern Wayne Schools

Matthew Hicks
 Northeastern Wayne Schools

Amy Hubble
 Office 360

Sue Miller
 Brady Ware

Mikel McCoy
 Centerville-Abington
 Community Schools

Jamille Bacon
 Menasha

Jim Summers
 Indiana University East

Andy Stover
 Western Wayne Schools

Amanda Upchurch
 3Rivers Credit Union

Angela Lakes
 Indiana University East

Terry Abner
 Blue Buffalo

Susan Mullins
 Edward Jones Financial
 Director

Kory George
 Wayne County Probation
 Department

William Wright
 Richmond Community
 School Corporation

Income

City County	\$8,700.00
Corporate	\$34,695.00
Events	\$15,231.40
Foundations	\$104,500.00
Individual	\$39,816.82
In-Kind Donations	\$4,737.70
Interest Income	\$8,169.69
Nonprofits	\$16,500.26
School districts	\$354,628.96
United Way	\$ 21,442.10
<hr/>	
Total Income	\$608,421.93

Expense

Audit	\$5,381.88
Events & Fundraising	\$5,744.32
Information Tech	\$2,713.95
In-Kind Donations	\$4,737.70
Insurance	\$4,598.17
Marketing	\$4,359.20
Miscellaneous	\$2,334.57
Rent & Utilities	\$9,492.66
Salaries & Payroll	\$550,855.09
Staff Training/Travel	\$5,522.04
Supplies	\$1,709.35
<hr/>	
Total Expense	\$597,448.93

Communities In Schools of Wayne County 2023 ©

Mailing Address:

1425 East Main Street
Richmond, IN 47374

CISWayneCo.org

Find us online!



Communities
In Schools

Wayne County

Director's Note

As I enter my ninth year as Executive Director of Communities In Schools of Wayne County, I'm proud to acknowledge the growth and success of our organization with a huge thank you to our Board of Directors, committed staff, schools, and community.

Thanks to all of you we have had yet another remarkable year of service to our students. Our dedicated staff has done an incredible job at expanding our outreach while strengthening our programs and services. Our Board of Directors and Superintendents have helped our organization dramatically increase our community donor base which is a critical necessity that allows us to sustain our services and encourage our students to be successful in school and go on to lead successful lives.

That said, these are all signs of our organization doing the "right thing" as a whole with your sincere dedication and contributions. I'm confident the coming year will be the best year yet for Communities In Schools.

Thank you wholeheartedly for being a part of this nonprofit organization that is a catalyst for social change in a positive, life changing way for our children.



Executive Director

Becky Murray